



## 2019+ RAM HEAVY DUTY XB LED HEADLIGHTS INSTALL GUIDE

**WARNING:** By reading this document, you agree it is only to be used as an educational guide. Morimoto Lighting nor its dealers make guarantees on any finished results, nor are they to be held responsible for any damage, misuse, or personal injuries. If you are unable to clearly understand and adapt the information below, professional installation is recommended.

### PACKAGE CONTENTS



2X HEADLIGHT ASSEMBLIES



1 X FUSE TAP / DRL HARNESS

**IMPORTANT:** If your vehicle is equipped with anything but OEM turn signals (full assemblies, LED bulbs, or otherwise) in the tail lights or elsewhere: You may experience a hyper flash and/or problem with the sequential signal setting on these headlights. This is not a defect in the headlight, and caused by un-matched impedance with your original vehicle settings.

# 2019+ RAM HEAVY DUTY



## REQUIRED TOOLS

- RATCHET
- 10MM SOCKET
- T15 TORX BIT
- FLAT HEAD SCREWDRIVER OR TRIM REMOVAL TOOL
- PHILIPS HEAD SCREWDRIVER
- NEEDLE NOSE PLIERS

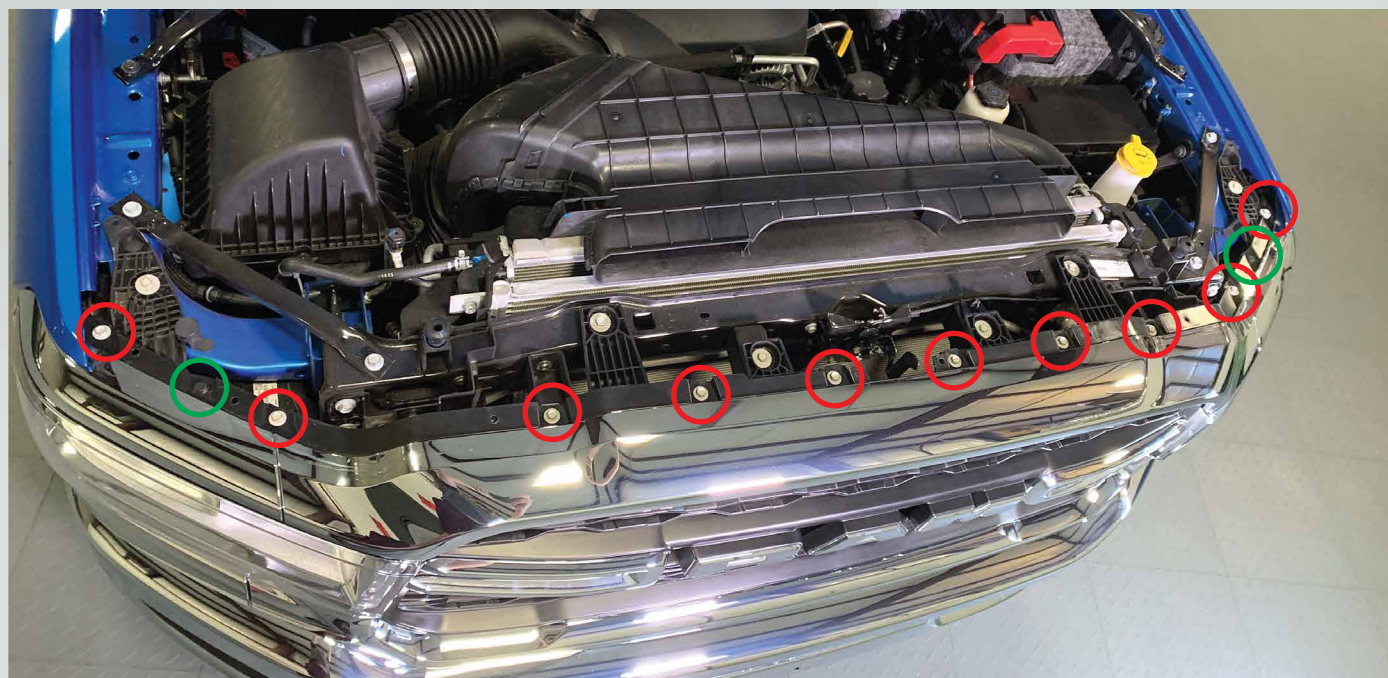


# INSTALLATION PROCESS

1. Remove the fourteen (14) plastic clips holding on the grille cover.

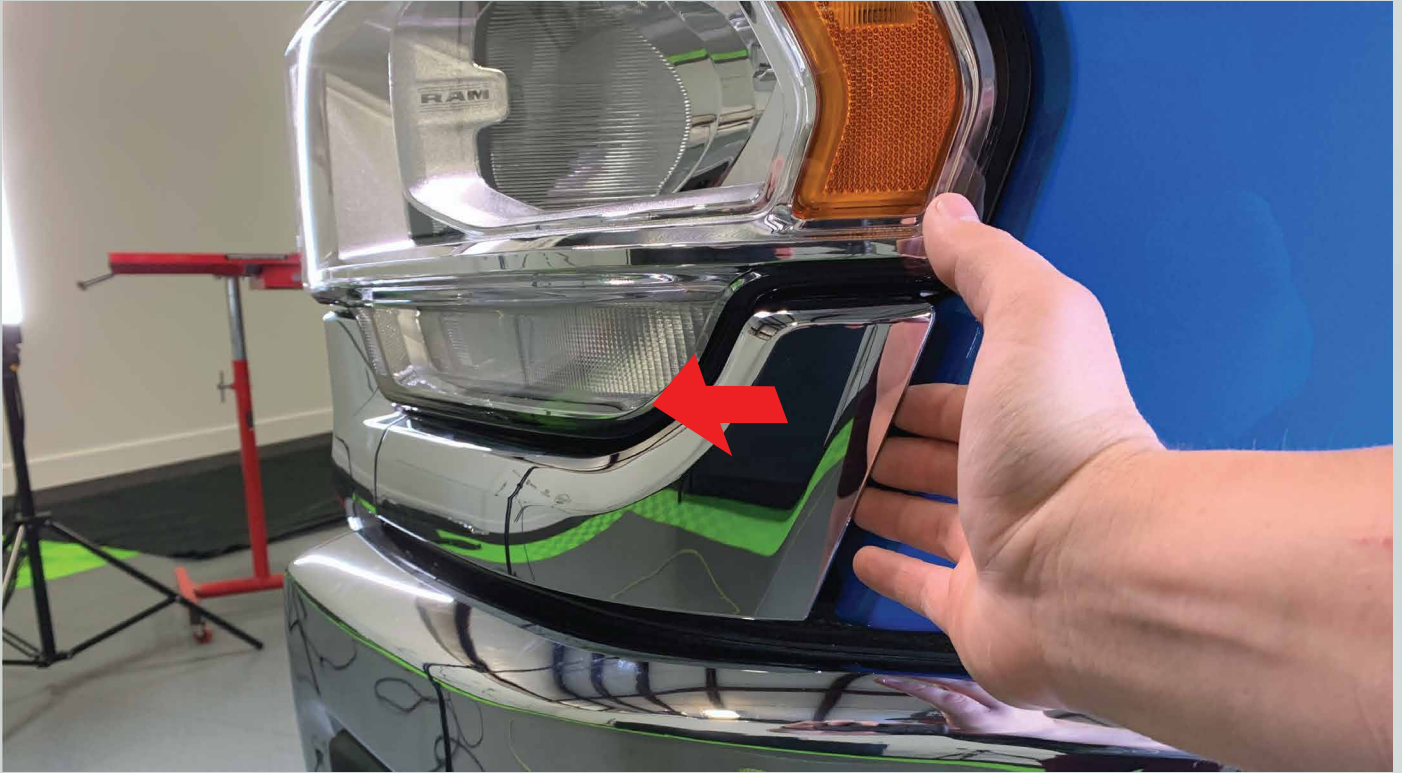


2. Remove ten (10) 10mm bolts (red). Remove the two (2) plastic clips (green) by prying up on the heads of the clips then prying the base of the clip out of the hole. Slide it forward and remove it off the truck.





3. With your fingers or pry tool and some force, pry forward on this trim piece. There are 5 clips holding it on. Repeat on the other side.



4. Remove one (1) 10mm bolt from each side of this lower trim piece.

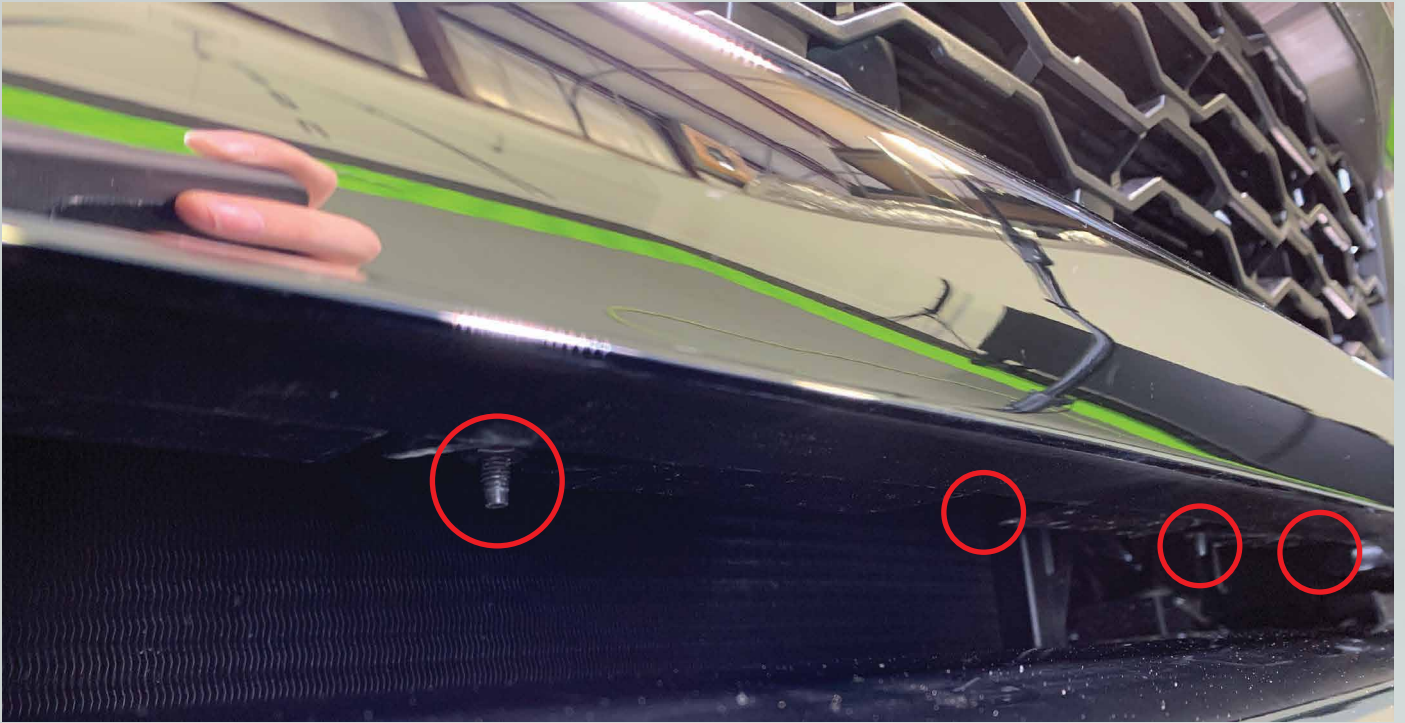


5. Go under the passenger side of the front bumper and loosen this one (1) 10mm nut. Repeat this on the other side of the truck.

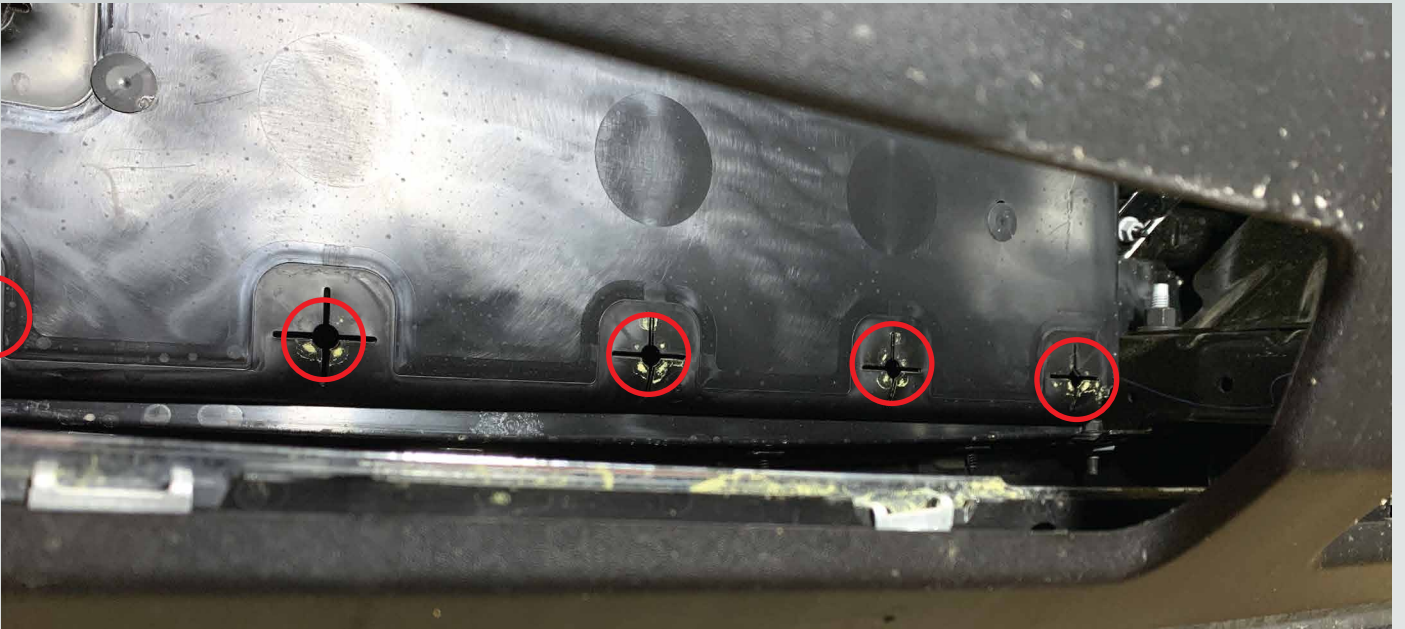




6. Under the center part of the lower trim piece you will have to loosen five (5) 10mm nuts.

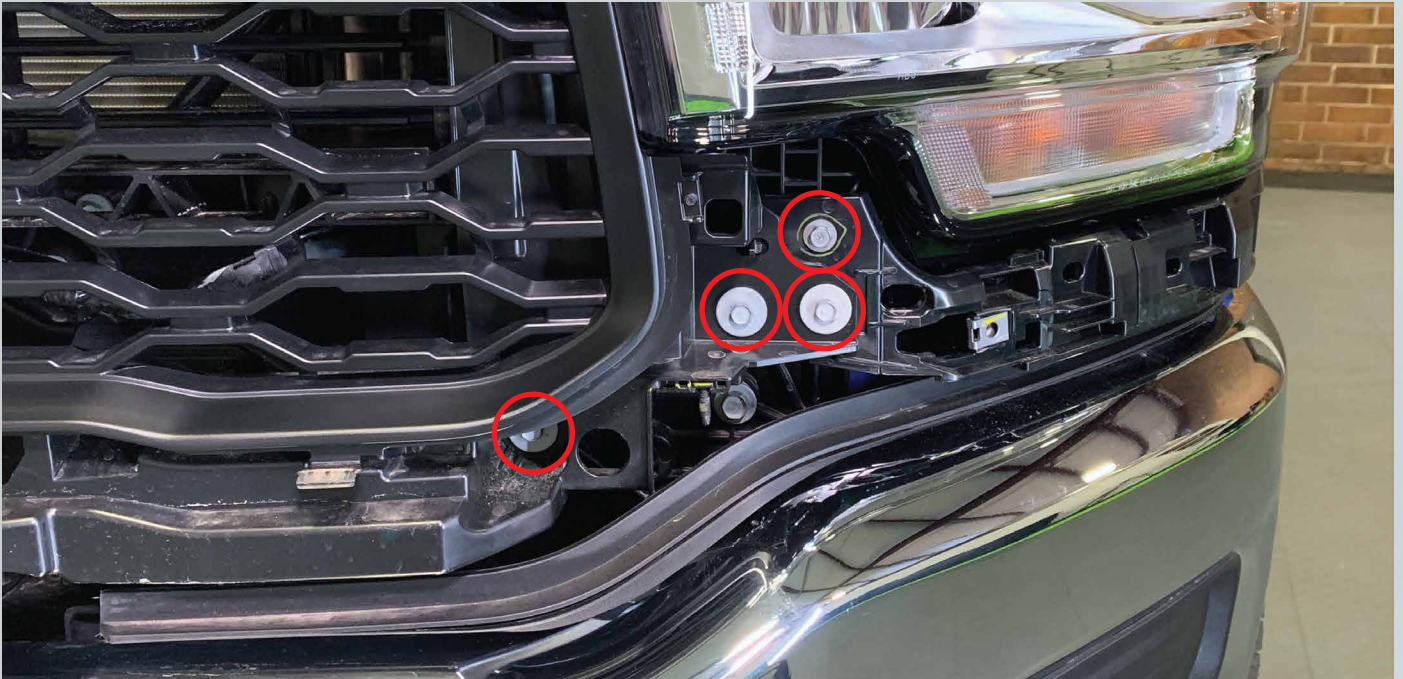


Easiest way to access these nuts is from under the bumper and through these slots.

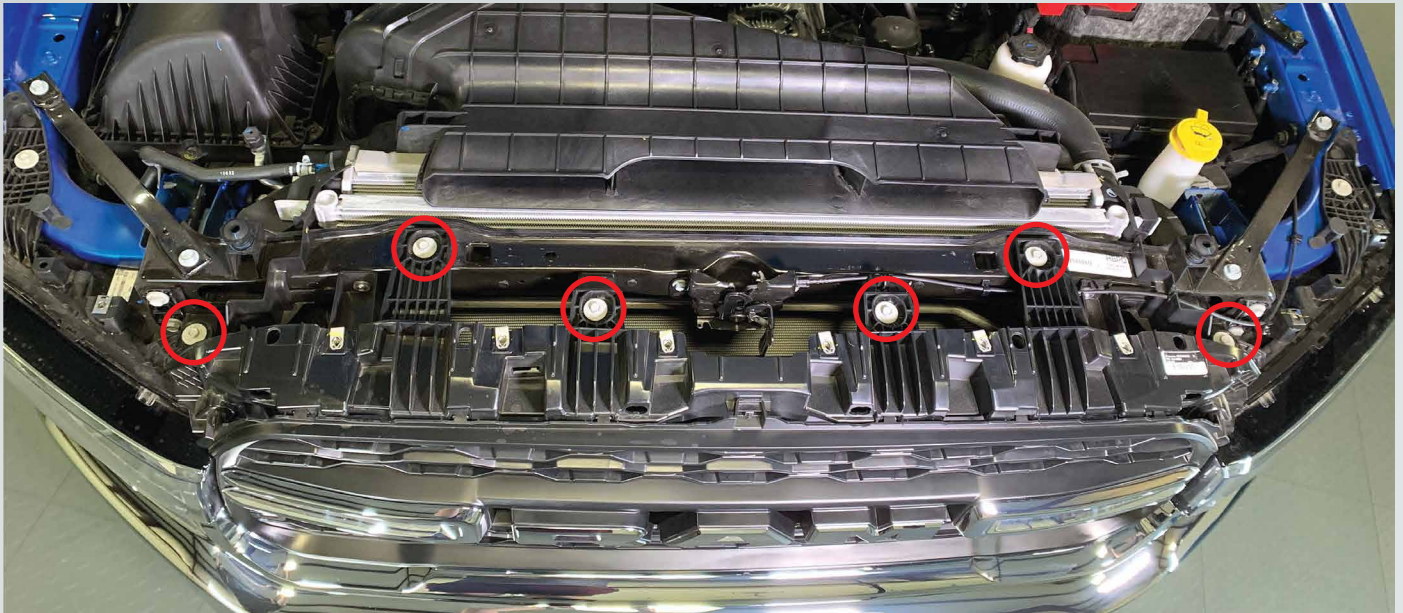




7. Remove four (4) 10mm bolts on each side of the grille.

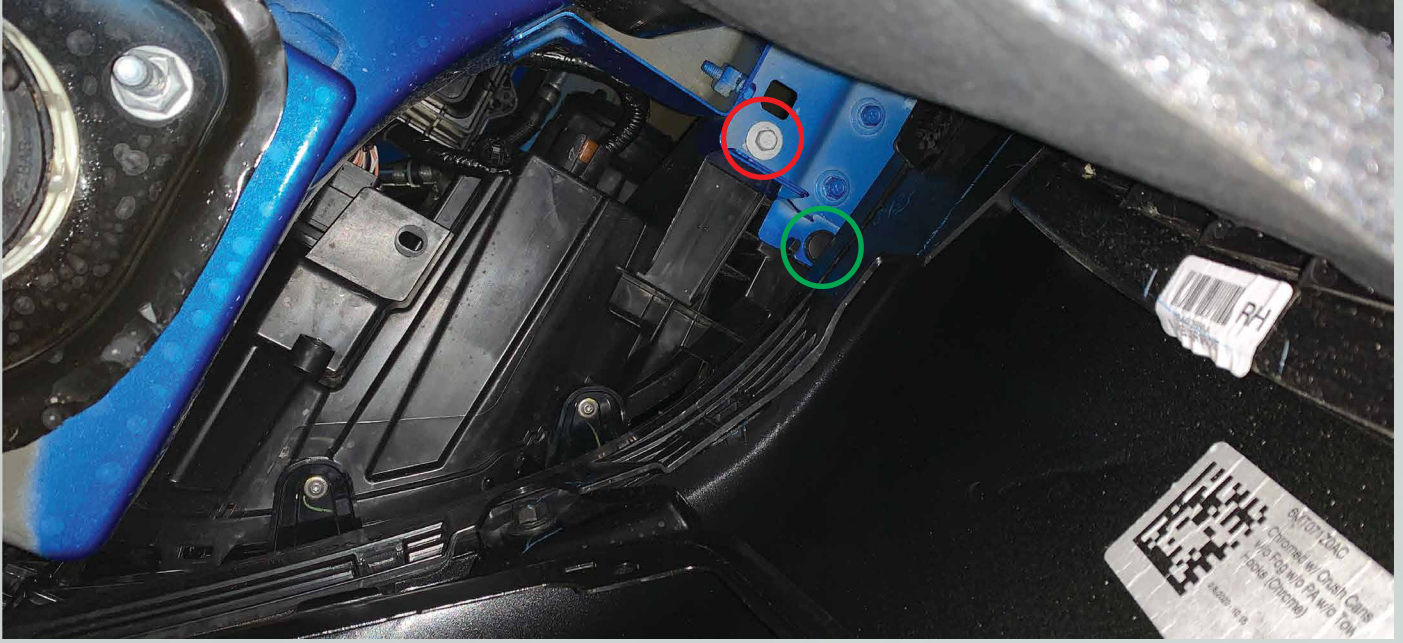


8. Remove six (6) 10mm bolts holding the top of the grille. Remove the grille off the truck.





9. From underneath the headlight remove one (1) 10mm bolt and one (1) push clip.

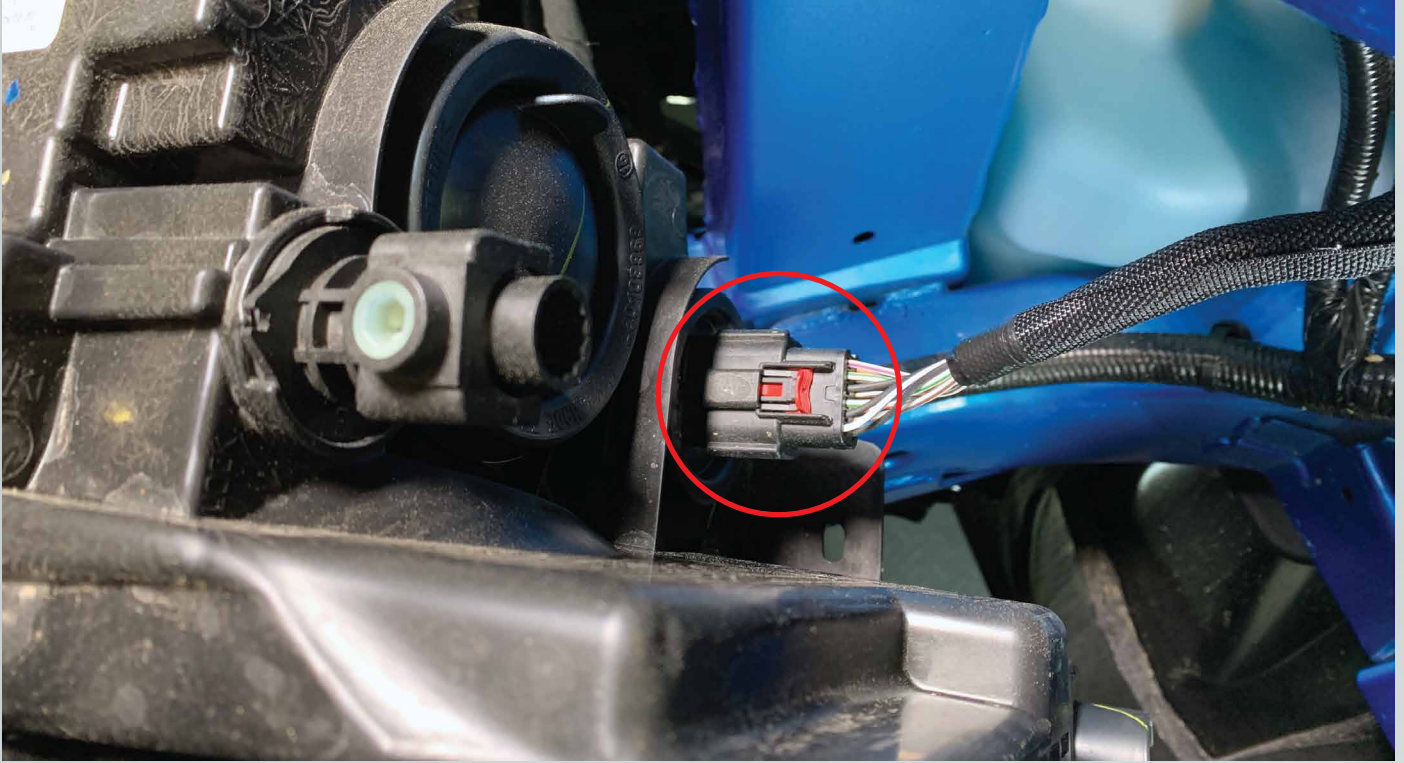


10. Remove one (1) 10mm bolt and one (1) push clip holding the top of the headlight. Pull the headlight forward.





11. Unplug the connector by pull the red tab away from the headlight, press down the release tab and pull the connector away from the headlight. Remove headlight from the truck.



12. Remove the two (2) 10mm bolts from the bottom bracket.



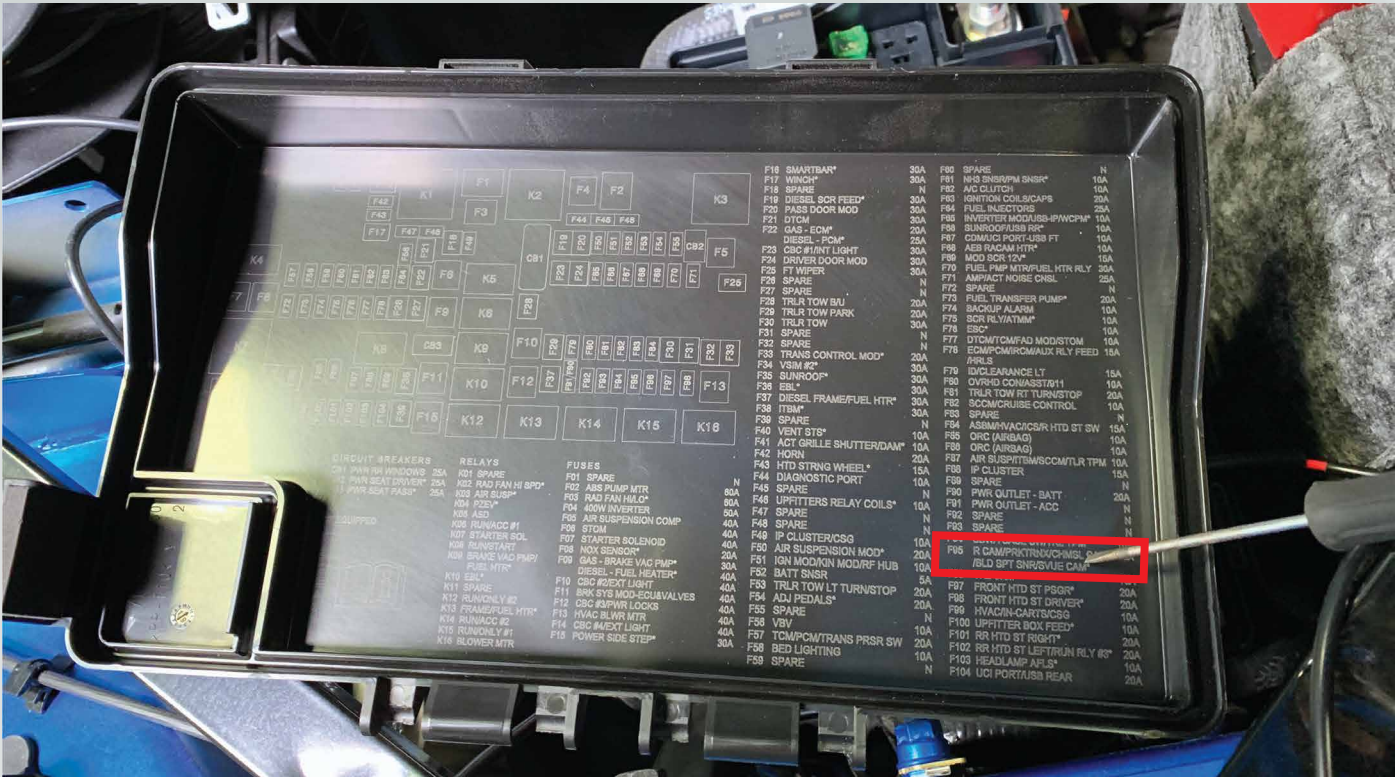


13. Remove two (2) T15 Trox bolts holding the the bottom bracket. Transfer the bracket and bolts onto the xb headlights.



14. Repeat steps # 9-14 on the other headlight.

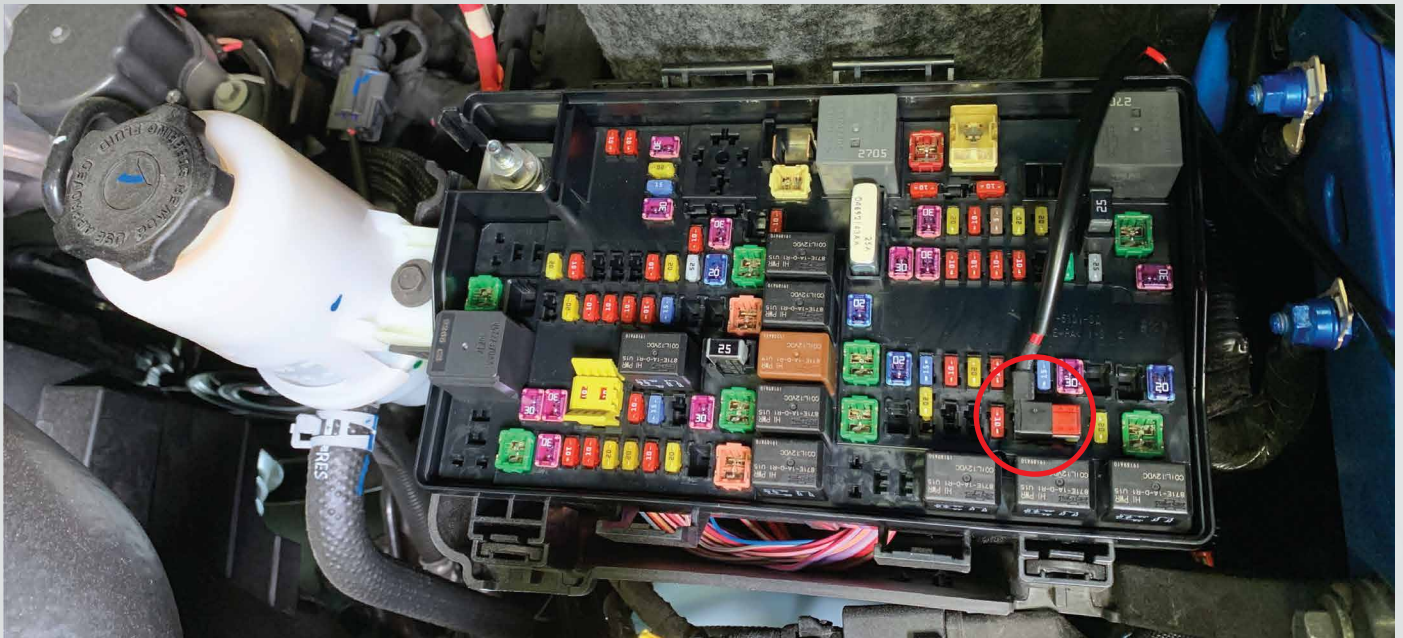
15. Locate the fuse box behind the driver headlight and remove fuse #F95.







16. Locate the included DRL fuse tap harness. Plug the fuse side into the fuse side into fuse spot #F95. Run the short side of the harness to the driver headlight area and the longer side of the harness to the passenger headlight area. Secure the harness to the truck.

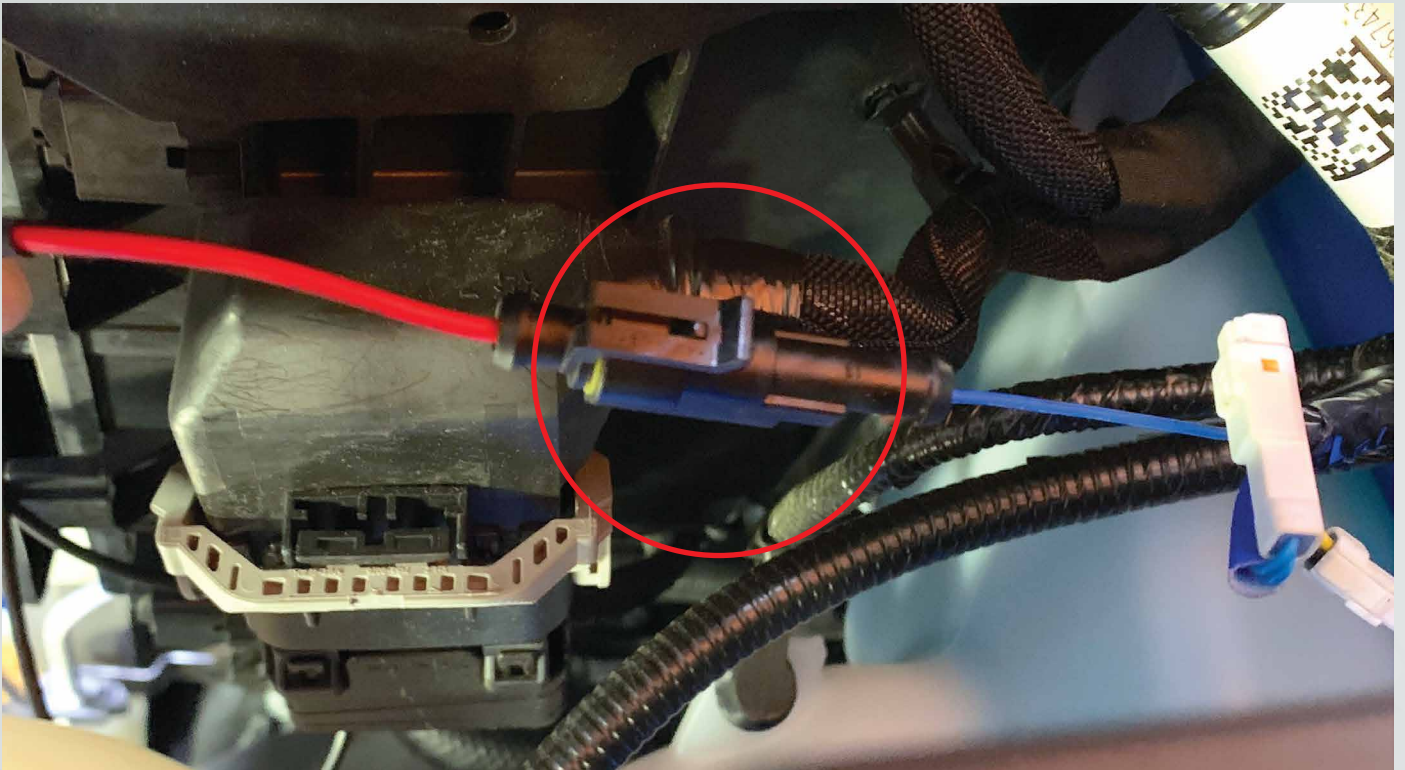




17. Connect the main plug from the XB headlight to the factory connector.

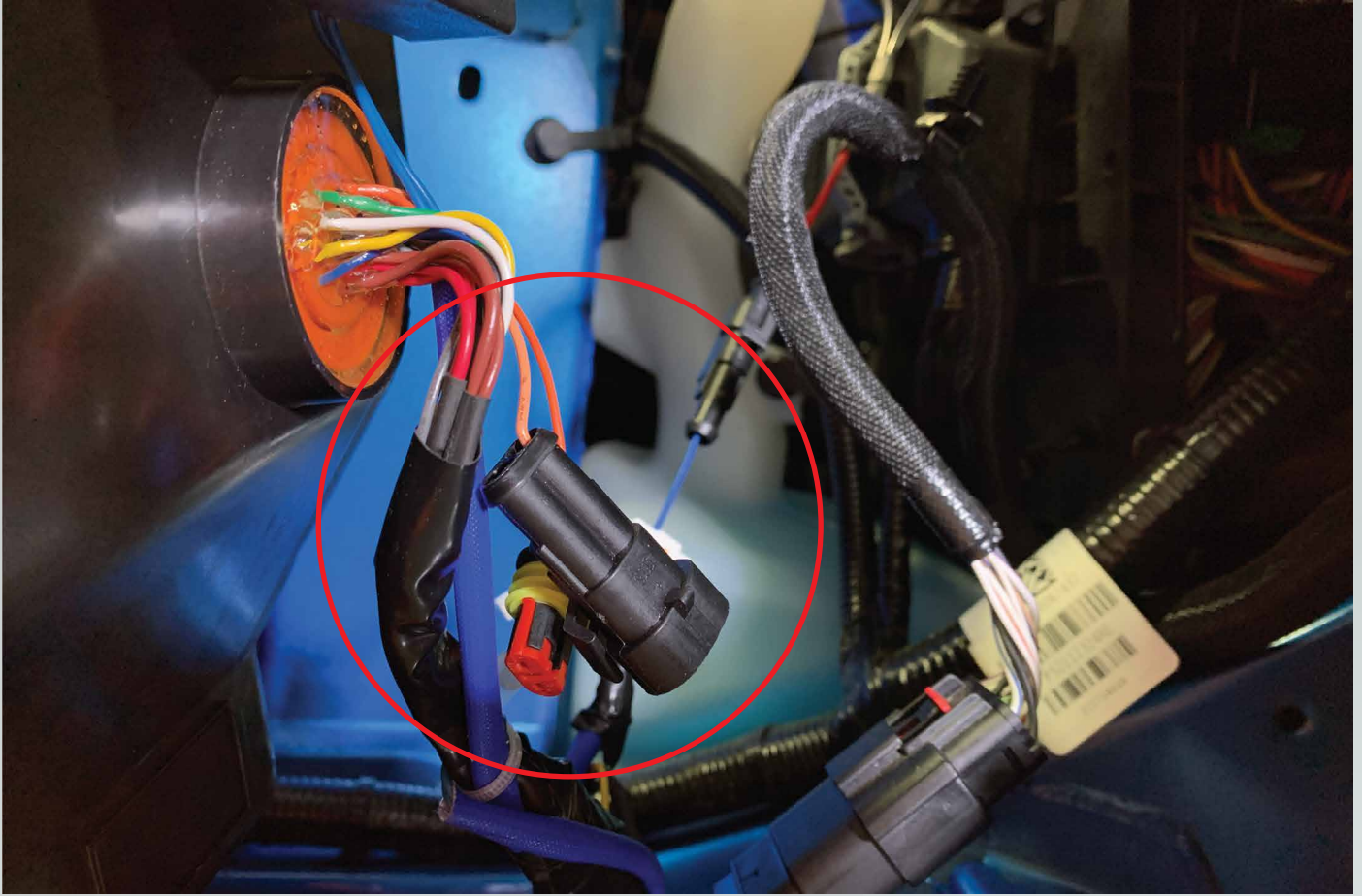


18. Connect the DRL harness plug with the blue wire into the xb headlight plug.



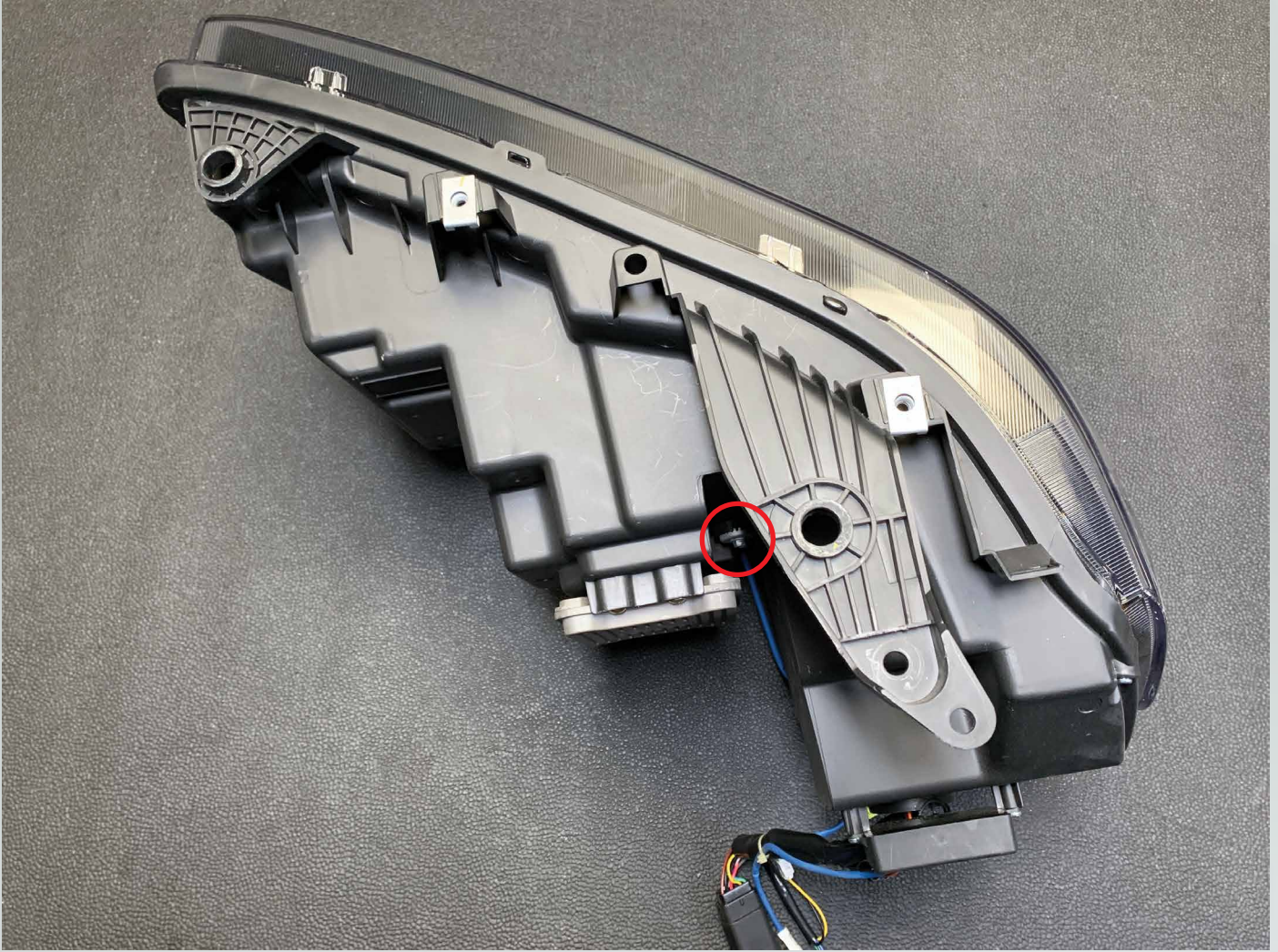


19. To have a sequential turn signal leave these 2 connectors unplugged. To have a solid turn signal simply plug these 2 connectors into each other.



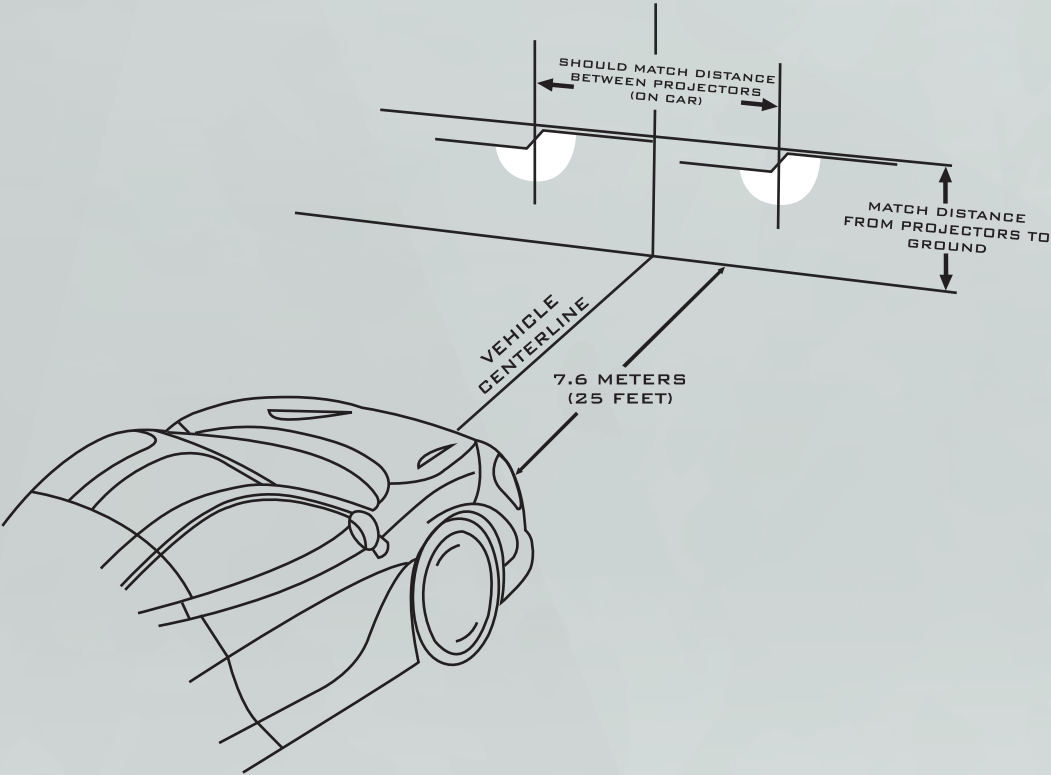
20. Repeat step 17-19 on the other side of the truck.
21. Turn the truck on and test all of the functions to make sure everything works.
22. Reassemble the truck in the reverse order that you took it apart.

- To adjust the headlight beam insert a philips head screwdriver in this screw and turn clockwise to make the beam go up and counter clockwise to make the beam go down.





- Please refer to the aiming standards below when adjusting your headlight beam.



**ENJOY YOUR NEW MORIMOTO XB HEADLIGHTS!**

